

## River's Edge Wayland

Question to EDC:

Where could 40B developments be built in Wayland?

Answer: There is no site minimum for 40B developments. However, given the generally long process of securing 40B approvals, there appears to be a de facto minimum of say 2-3 acres.

### Recent Wayland smaller 40B examples:

Post Road Village	Rt 20	3.0 acres
Katie Barton Site	Rt 30	3.26 acres (2 sites combined)
Tripolis Circle (Old Conn Path)	Rt 126	2.77 acres

The following Wayland GIS map highlights all sites over 2 acres, excluding conservation, town-owned or federally-owned lands (and larger parcels already developed with condominiums). Wetlands are also noted, which affect development feasibility of a site.

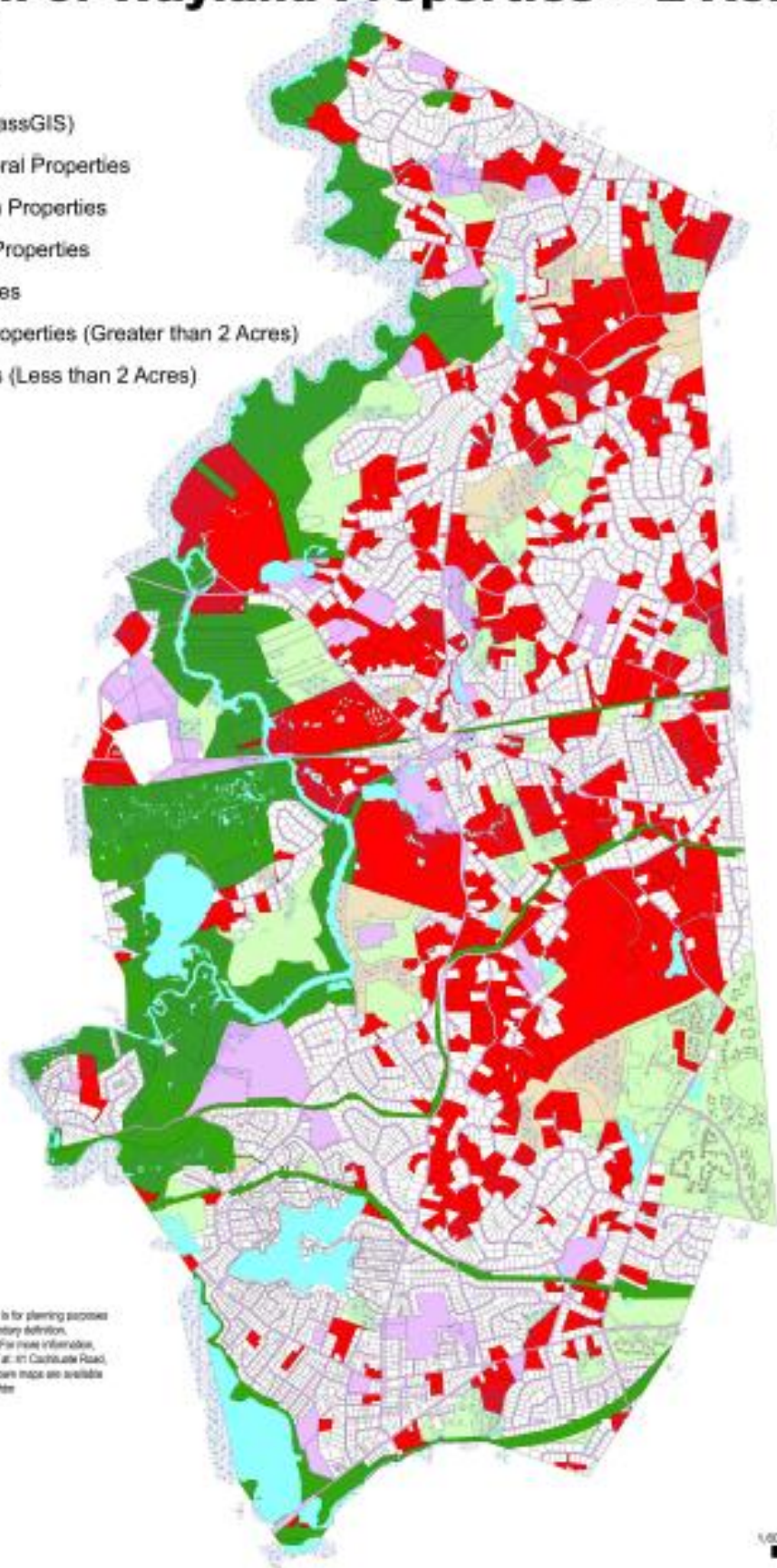
This map is meant to be illustrative only, simply to highlight the number and location of potential 40B sites in Wayland for discussion purposes. It is not meant to be an exhaustive, conclusive survey of the viability of each and every site.

It should also be noted that small adjacent sites can be combined into larger feasible sites and this map does not capture that potential either.

# Town of Wayland Properties > 2 Acres

## Map Features

- Open Water
- Wetlands (MassGIS)
- State & Federal Properties
- Conservation Properties
- Other Town Properties
- SVT Properties
- All Private Properties (Greater than 2 Acres)
- All Properties (Less than 2 Acres)



**DISCLAIMER:** The information depicted on this map is for planning purposes only. This information is NOT adequate for legal boundary definition, regulatory interpretation, or conveyancing purposes. For more information, contact The Town of Wayland Surveying Department at: 41 Cuckoo's Road, Wayland, MA 01778, or telephone (508) 255-2824. Town maps are available online at <http://www.wayland.ma.us/surveying/maps.htm>



1,000 000 0 1,000 Feet